



Nokia IP Security Solutions

Nokia IP120

The Nokia IP120 is a purpose-built desktop or wall mount security platform for small enterprise and remote office, branch offices (ROBO).

The Nokia IP120 combines market-leading security software and the Nokia IPSO™ secure operating system for a secure, reliable and manageable security solution. It is a cost-effective, proven appliance that meets space, price and performance requirements while providing high reliability and maximum dependability.

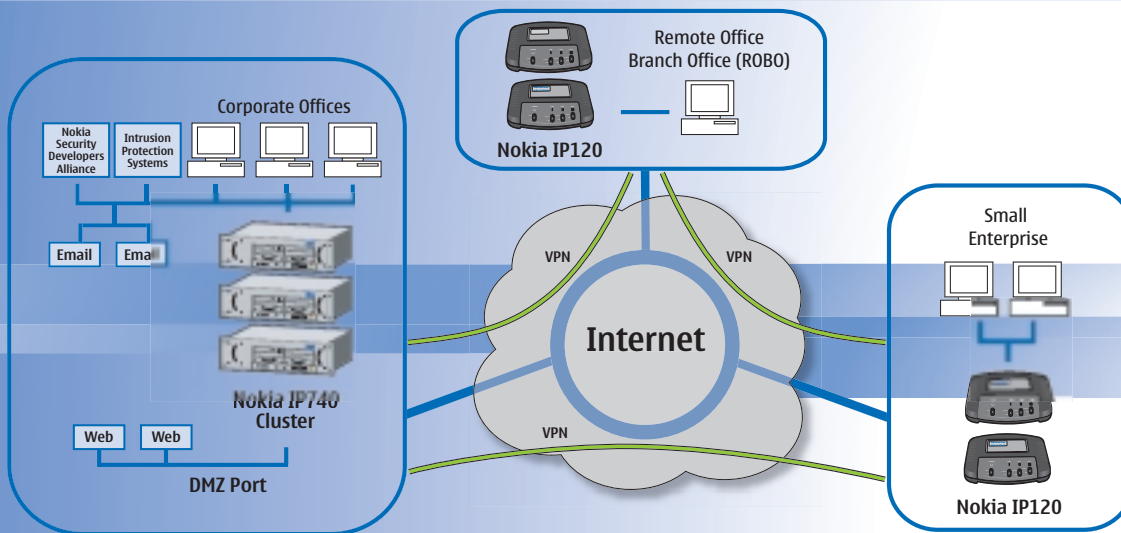
To deliver best-of-breed security solutions, Nokia works with key technology partners like Check Point for VPN-1/Firewall-1 security software, Internet Security Systems, the leading software company for intrusion protection, and additional partners through the Nokia Security Developers Alliance.

The Nokia IP120 is one of the best-value platforms available today that addresses real-world mixed traffic environments with capabilities of more expensive competitive systems. It can support financial, medical or other mission critical institutions to protect their remote branches. It is ideal for small stand-alone enterprise companies needing high reliability and good performance at a low Total Cost of Ownership (TCO).

Nokia IP120 benefits include versatility for use as either a desktop or wall mount device, performance to scale with a company as it grows, and use of the industry-proven hardened Nokia IPSO

operating system. The Nokia IP120 has superb manageability through the Nokia Network Voyager web-based and CLI interfaces. Nokia IPSO supports a wide array of protocols, such as RADIUS client server, TACACS+ Client and others. The IP120 also supports Nokia Horizon Manager for secure management of version control, backup and restore and other features.

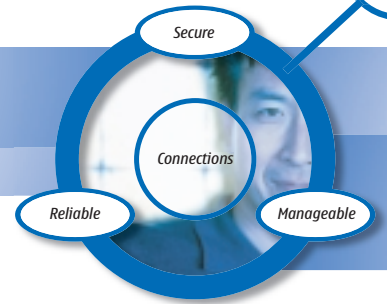
Best of all, security, performance and reliability are all backed 24/7 by Nokia world-class First Call—Final Resolution support.



NOKIA
CONNECTING PEOPLE

Nokia IP120 at a Glance

The Nokia IP120 is a purpose-built desktop or wall mount security platform for small enterprise and remote office, branch offices (ROBO).



Internet Protocol

- IP RFC 791
- ICMP RFC 792
- ARP RFC 826
- ICMP Router Discovery (Server) RFC 1256
- CIDR RFC 1519
- Static Routes
- RIP RFC 1058
- RIP Version 2 (with authentication) RFC 1723
- OSPF RFC 2328
- DVMRP (multicast) RFC 1075
- IGMP (multicast) RFC 2236
- PIM-DM (multicast)
- PIM-SM
- Multicast Tunnels
- IGRP (optional) Cisco
- BGP4 (optional) RFC 1771
- IPv6 core RFCs
- Requirements for IPv4 Routers RFC 1812
- Differentiated Services (EF) RFC 2598
- Bootp/DHCP Relay RFC 2131
- Route Aggregation
- Route Redistribution
- Un-numbered Interfaces

LAN Support

- 10/100 Mbps Ethernet

Statistics

- Firewall throughput
 - 102 Mbps
- VPN throughput
 - 4.4 Mbps

Management

- SNMP RFC 1157
- SNMPv2c
- SNMPv3
- Telnet RFC 854
- FTP RFC 959
- SSHv2 (secure Telnet & FTP)
- HTTP Server RFC 2068
- SSL/TLS RFC 2246
- Command Line Utilities
- Supported in Nokia Horizon Manager

High Availability

- VRRP RFC 2338
- FireWall-1 State Sync

Security

- Secure Administrative Access
- Read/Write and Read-Only Access Modes
- SSH (secure Telnet & FTP)
- SSL/TLS (secure HTTP) RFC 2246
- S/Key (one-time password) RFC 1760
- Access Control Lists
- Traffic Management
- MD5 Routing
- Authentication (RIPv2) RFC 1723
- Centralized Authentication
- Native IPsec (for non-firewall applications)

Application Acceleration

- Firewall Flows

System Status Indications

- 10/100 Ethernet port status

Environment

- Temperature: 5°C to 40°C
- Humidity: 10% - 90% (non-condensing)
- Altitude: 10,000 ft

Supported Standards

- IPsec (RFCs 2401-2411, 2451)
- PPTP (RFC 2637) Point to Point Tunneling Protocol
- L2TP (RFC 2661) Layer 2 Tunneling Protocol
- GRE (RFCs 1701 & 1702) Generic Routing Encapsulation

Safety

- UL1950, CE Mark, CUL/CSA 22.2 NO. 950-M93, IE950, TUV EN60950

Emission Compliance

- FCC Part 15, Class A, EN55022 (CISPR22, Class A) CE Mark



Nokia IP120

Remote Office, Branch Office and Small Enterprise

Standard:

- 3 Integrated 10/100 Ethernet ports
- 2 Serial ports (auxiliary and console)
- 128MB RAM

Optional Interfaces:

- None

Hardware:

- Height 2.10 in. / 5.33 cm
- Depth 8.34 in. / 21.18 cm
- Width 9.35 in. / 23.75 cm
- Weight 11.3 oz / 318 g
- Desktop or wall mountable

Power Requirements:

- AC Input Voltage 100-120/200-240VAC
- Frequency 50/60Hz
- AC Input Current 0.9A



Americas

Tel: 1 877 997 9199
Email: ipsecurity.na@nokia.com

Asia Pacific

Tel: +65 6588 3364
Email: ipsecurity.apac@nokia.com

Europe, Middle East and Africa

France +33 170 708 166
UK +44 161 601 8908
Email: ipsecurity.emea@nokia.com

NOKIA
CONNECTING PEOPLE